

Atlanta

- Zinc back plate
- Mounting kit included

PRODUCT SPECIFICATION SHEET

ATLANTA SERIES

ATL-TRRD-BN



FEATURES

- MODERN DESIGN
- CAST BACKINGS
- ZINC+STEEL COMPOSITION
- WALL MOUNTED

FINISHES IN STOCK

- POLISHED CHROME (PC)
- BRUSHED NICKEL (BN)
- MATTE BLACK (MB)

MATERIAL

- ZINC
- STAINLESS STEEL 304

WARRANTY

- LIFETIME LIMITED (RESIDENTIAL USE)
- ONE YEAR (COMMERCIAL USE)

Product Code	Name	Finishes	Sizes (mm)			Sizes (Inches)		
			Length	Width	Height	Length	Width	Height
ATL- TB12	ATL-12 Towel Bar	PC, BN, MB	352	47	73	13 7/8	1 7/8	2 7/8
ATL- TB18	ATL-18 Towel Bar	PC, BN, MB	504	47	73	19 7/8	1 7/8	2 7/8
ATL- TB24	ATL-24 Towel Bar	PC, BN, MB	657	47	73	25 7/8	1 7/8	2 7/8
ATL- TB30	ATL-30 Towel Bar	PC, BN, MB	809	47	73	31 7/8	1 7/8	2 7/8
ATL- RH-1	ATL-Robe Hook	PC, BN, MB	51	47	73	2	1 7/8	2 7/8
ATL- TPEURO	ATL-Tissue Holder	PC, BN, MB	204	47	73	8	1 7/8	2 7/8
ATL- TRRD	ATL-Towel Ring	PC, BN, MB	180	210	73	7	8 1/4	2 7/8
ATL- TRSD	ATL-Towel Ring	PC, BN, MB	190	150	73	7 1/2	5 7/8	2 7/8



Bathroom Accessories

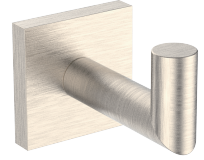
Atlanta

- Zinc back plate
- Mounting kit included

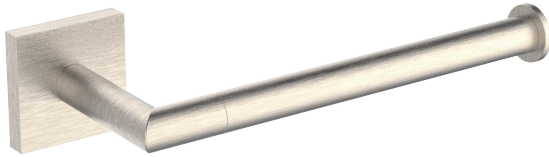
12"/18"/24"/30" Towel Bar
ATL-TB12/TB18/TB24/TB30-BN



Robe Hook
ATL-RH-1-BN



Tissue Holder
ATL-TPEURO-BN



Towel Ring
ATL-TRRD-BN



Towel Ring
ATL-TRSQ-BN

